

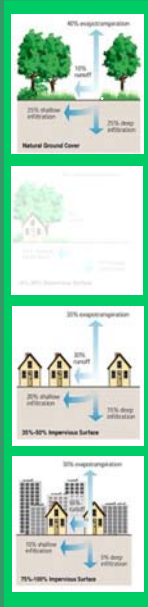
Codifying Low Impact Development

How To Git-R-Done

Low Impact Development Workshop

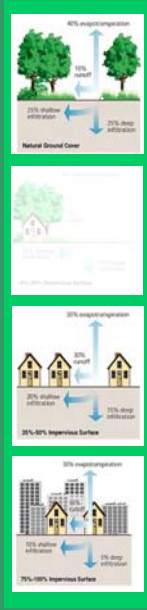
Definitions

- Low Impact Development
 - is an approach to land development that uses various land planning and design practices and technologies to simultaneously conserve and protect natural resource systems and reduce infrastructure costs. Under LID land is developed in a cost-effective manner that helps mitigate potential environmental impacts.



Low Impact Development Workshop

Definitions

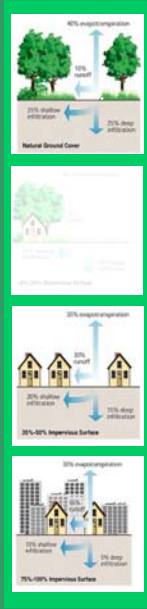


- **Master Plan** (*Code of Alabama Section 11-52-8*)
 - the Master Plan serves as a guide for the community to develop its infrastructure and maximize its physical and other assets as it grows.



Low Impact Development Workshop

Definitions



- **Zoning Code** (*Code of Alabama Section 11-52-70*)
Municipal ordinance that specifies how and for what purpose each parcel of private real estate may be used.



Low Impact Development Workshop

Definitions

- Subdivision Regulations

(Code of Alabama Section 11-52-30)

- control the pattern of development, the way land is divided up to accommodate land uses and supporting infrastructure such as roads and utilities. Such regulations ... in relation to other existing or planned streets and to the **master plan**



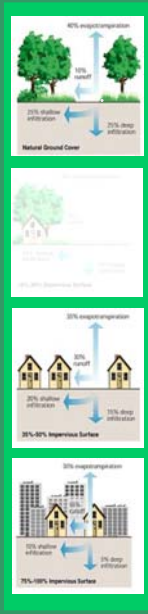
Low Impact Development Workshop

Definitions

- Design and Construction Guidelines

(Code of Alabama Section 11-53-4)

- authority of incorporated municipalities to adopt ordinances relating to the establishment and enforcement of minimum standards for buildings, dwellings and structures of **all types and descriptions** used for human habitation and occupancy and is cumulative to and in addition to existing legal authority.



Low Impact Development Workshop

LID Elements

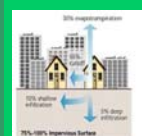
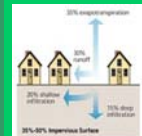
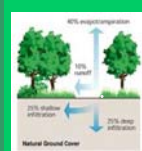


- Setbacks and Frontages
- Street Width
- Sidewalks
- Cluster Housing
- Land Conservation
- Cul De Sacs
- Driveways
- Parking Lots
- Parking Spaces
- Rooftop Runoff
- Stream Buffers
- Buffer Maintenance
- Storm Water
- Erosion Control
- Tree Conservation



Low Impact Development Workshop

Zoning Code



- Setbacks and Frontages
- Street Width
- Sidewalks
- Cluster Housing
- Land Conservation
- Cul De Sacs
- Driveways
- Parking Lots
- Parking Spaces
- Rooftop Runoff
- Stream Buffers
- Buffer Maintenance
- Storm Water
- Erosion Control
- Tree Cover



Low Impact Development Workshop

Subdivision Regulations

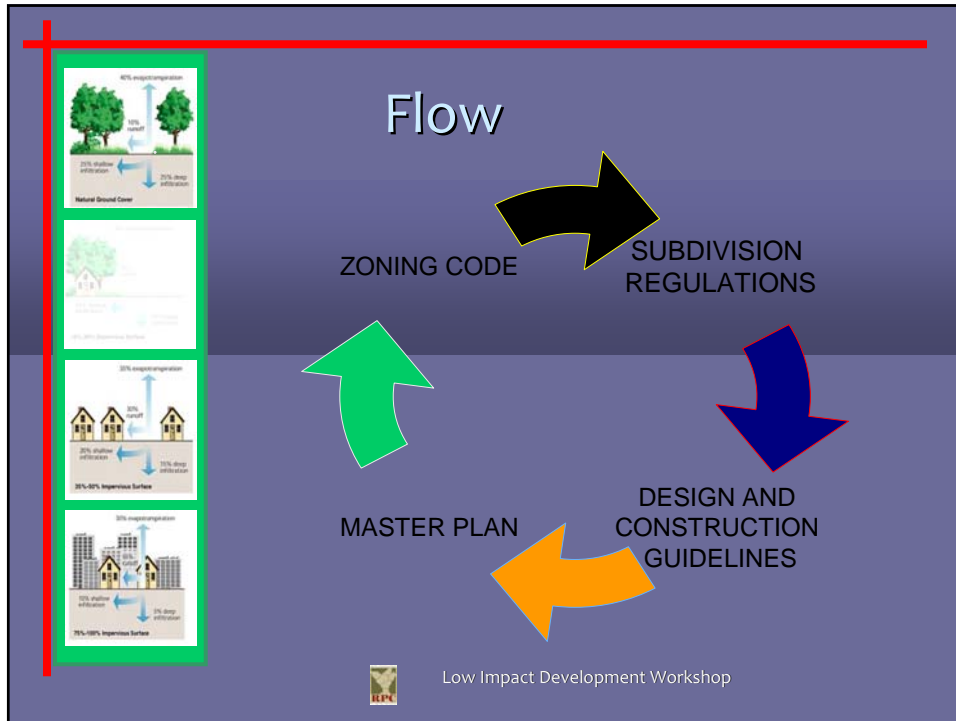
- Setbacks and Frontages
- Street Width
- Sidewalks
- Cluster Housing
- Land Conservation
- Cul De Sacs
- Driveways
- Parking Lots
- Parking Spaces
- Rooftop Runoff
- Stream Buffers
- Buffer Maintenance
- Storm Water
- Erosion Control
- Tree Cover

Low Impact Development Workshop

Design and Construction Guidelines

- Setbacks and Frontages
- Street Width
- Sidewalks
- Cluster Housing
- Land Conservation
- Cul De Sacs
- Driveways
- Parking Lots
- Parking Spaces
- Rooftop Runoff
- Stream Buffers
- Buffer Maintenance
- Storm Water
- Erosion Control
- Tree Cover

Low Impact Development Workshop



THANK YOU

Steve Ostaseski
 Principal Planner
 Regional Planning Commission of Greater Birmingham
 Suite 200
 1700 1st Ave North
 Birmingham, AL 35203
www.rpcgb.org
smo@rpcgb.org
 205.264.8422

Low Impact Development Workshop